

ERL Maintenance Support Sdn Bhd

Co. Reg. No. 199901023674 (498574-T)

MEMORANDUM

To: ALL STAFF	Originator:	Suriani Farisa
	Department:	Human Resource
	Tel:	+(60) 3-2267-7654
	Fax:	+(60) 3-2267-7770
	E-mail:	SurianiEMS@kliaekspres.com

Reference Number:
OMG.STF.M11110.1031.A

Date:
30th April 2025

New E-MAS General Organisation Chart

Dear All,

The new E-MAS General Organisation Chart [G00.OMG.M11110.BB.0005.AK] has been updated in accordance with the following change(s):

1. Mr Thomas Baake appointment as Senior Consultant for E-MAS, an advisory role effective 1st February 2025
2. Dissolution of the Project and Engineering (PNE) Department.
3. Renaming of the Business Development Department to Asset Management and incorporating the Engineering & Systems Development (ESD) unit previously under the PNE Department.
4. Integration of the Depot & Workshop Equipment (DWE) unit into the Rolling Stock Department, formerly part of the PNE Department.
5. Integration of the Electronic Repair Centre (ERC) unit into the Maintenance Department, previously under the PNE Department.

This new organisation chart will **take effect from 5th May 2025**; and as such supersedes the previous E-MAS General Organisation Chart [G00.OMG.M11110.BB.0005.AJ].

For any further information, kindly refer to your respective HOD.

Thank you.

Sincerely

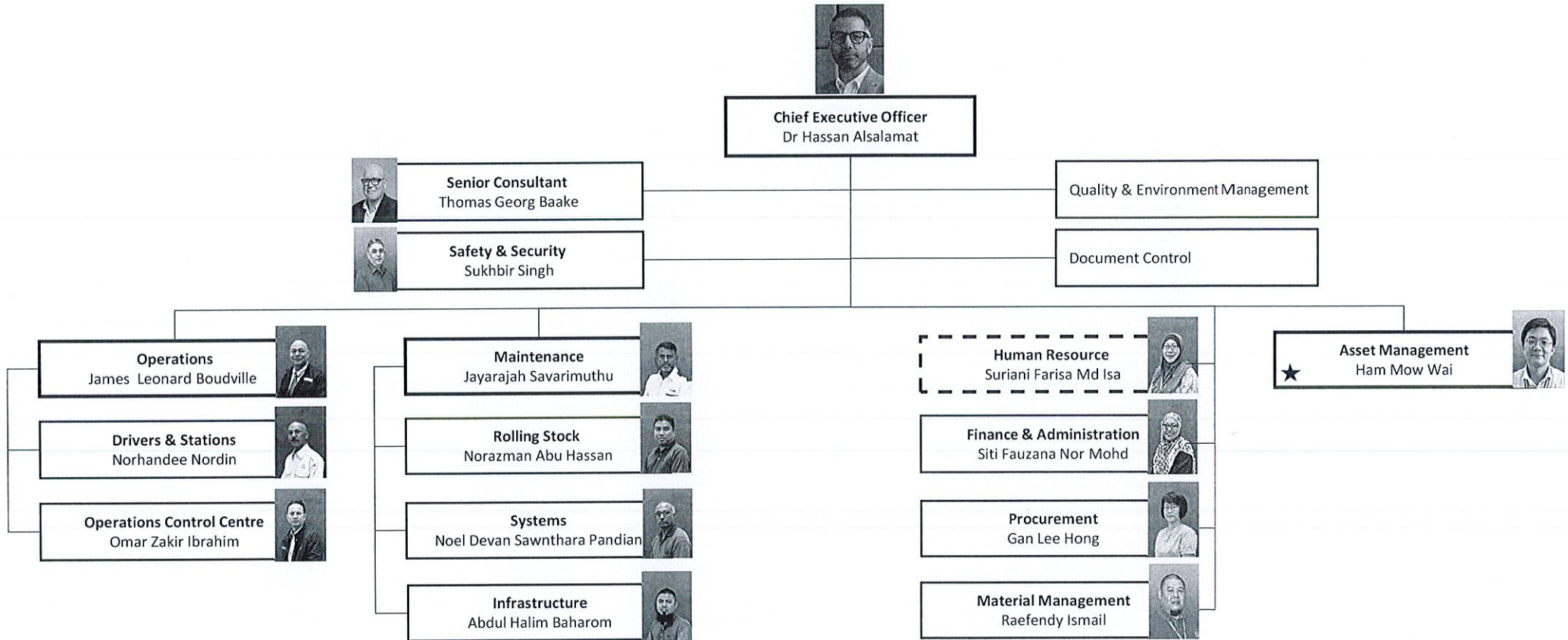


Dr. Hassan Alsalamat
30 APR 2025

Dr. Hassan Alsalamat
Chief Executive Officer

Attachments: New E-MAS General Organisation Chart - Ref. No.: G00.OMG.M11110.BB.0005.AK [#44478]
cc: {none}

ERL MAINTENANCE SUPPORT SDN BHD (E-MAS) ORGANISATION CHART

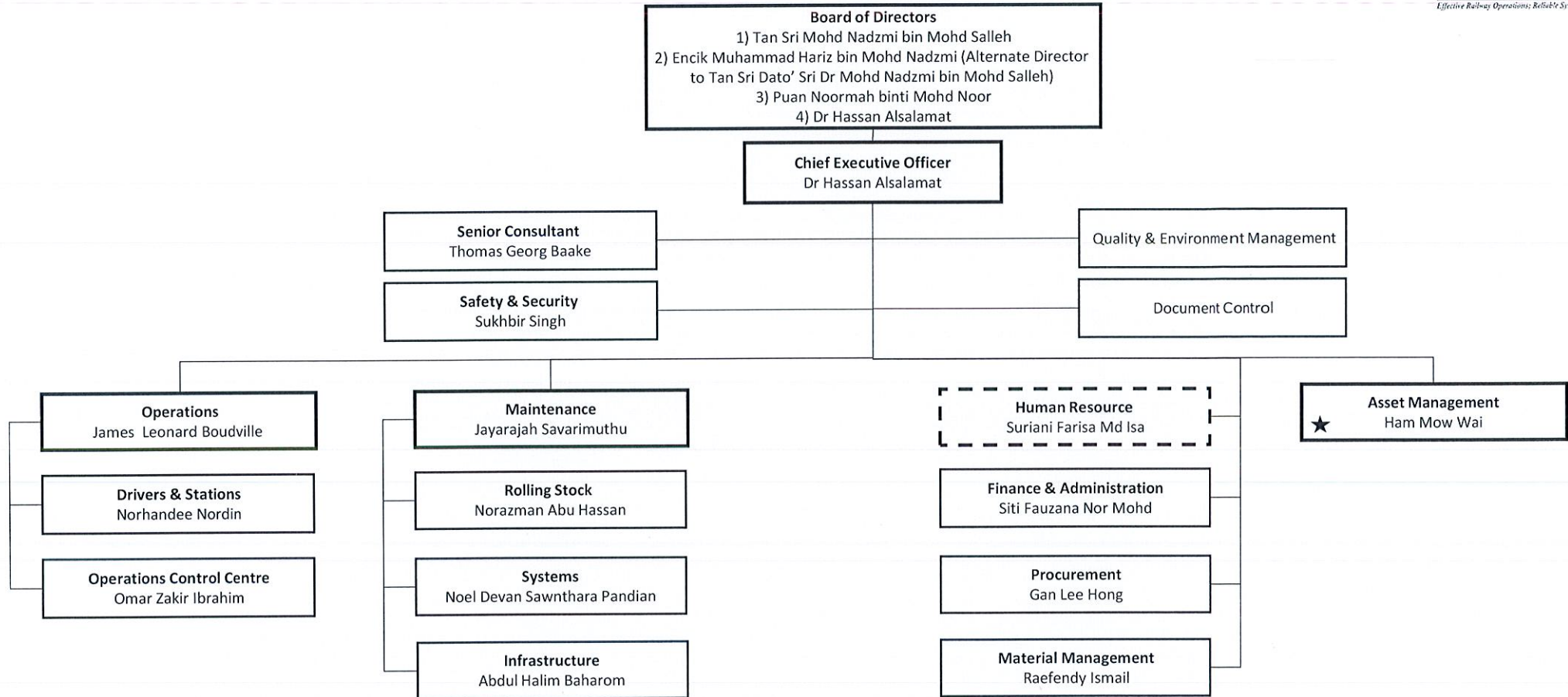


Legend :

— — — Group Head, Human Resource Management for ERLSB & E-MAS

★ All under Business Development [HAM, ATY & Dfq.] are current seconded to SPYTL

ERL MAINTENANCE SUPPORT SDN BHD (E-MAS) ORGANISATION CHART



Legend :

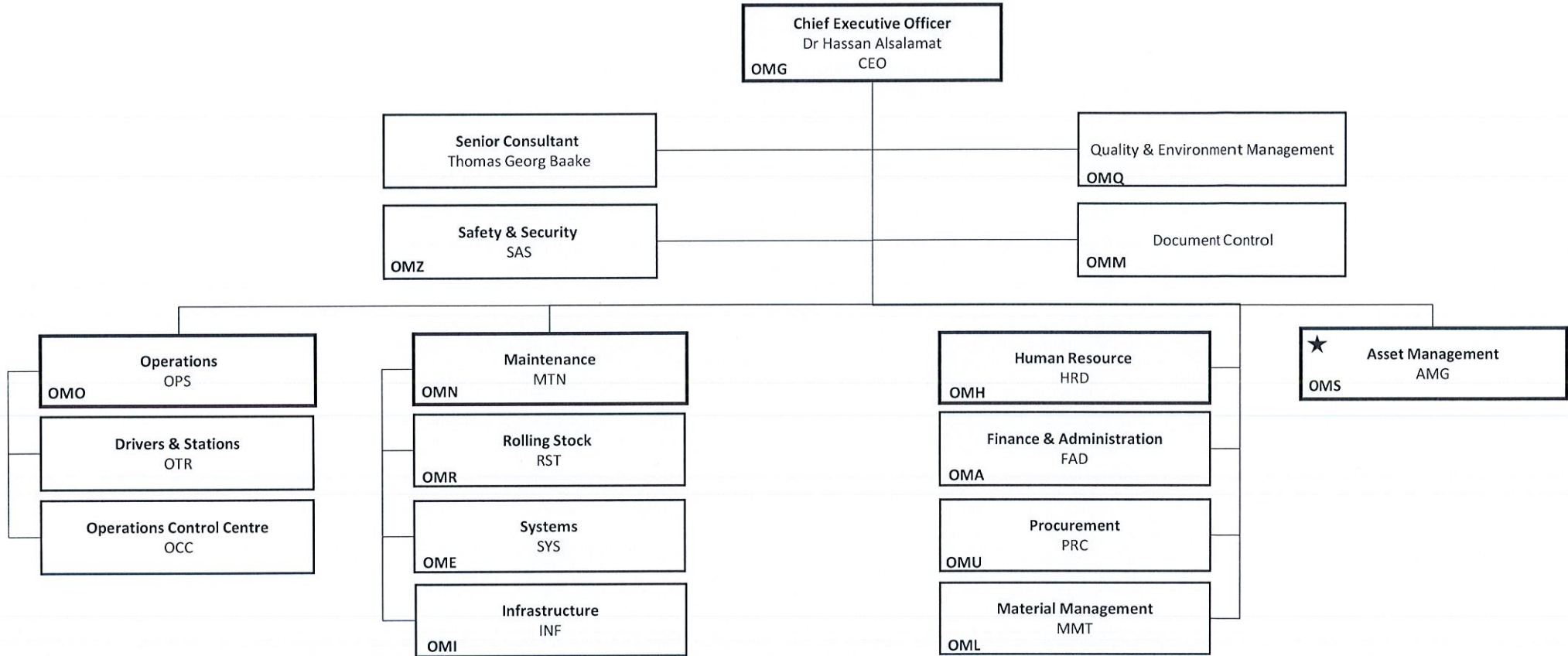
— — — Group Head, Human Resource Management for ERLSB & E-MAS

★ All under Business Development [HAM, ATY & DFQ] are current seconded to SPYTL

By

ERL MAINTENANCE SUPPORT SDN BHD (E-MAS) ORGANISATION CHART

[Department Code and Reference Code]



Legend :

— — — Group Head, Human Resource Management for ERLSB & E-MAS

★ All under Business Development [HAM, ATY & DFQ] are current seconded to SPYTL

De.