

# ERL Maintenance Support SdnBhd

Com Reg. No: 199901023674(498574-T)

[www.emskliaekspres.com](http://www.emskliaekspres.com)

## COMPANY PROFILE

Effective Railway Operations,  
Reliable System Maintenance



## ERL Maintenance Support Sdn Bhd (E-MAS)

E-MAS was established in 1999 as a joint venture between Express Rail Link Sdn Bhd (ERLSB) and Siemens AG.

In 2005 Express Rail Link Sdn Bhd became the sole owner of E-MAS.

E-MAS operates and maintains the Express Rail Link Services.

The Express Rail Link Services consist of the KLIA Ekspres and the KLIA Transit, with route length of 59 km from KL Sentral to KLIA 2.

KLIA Ekspres was designed with the air travellers' needs in mind. It is a high speed, non-stop air-rail connection between Kuala Lumpur International Airport ("KLIA") and Kuala Lumpur City Air Terminal at Kuala Lumpur Sentral station ("KL Sentral"). It has a journey time of 28 minutes at 15-minute frequencies (during peak hours) and 20-minute frequencies (during off-peak hours).

The KLIA Transit is a commuter service that stops at three intermediate stations - Bandar Tasik Selatan, Putrajaya/Cyberjaya and Salak Tinggi - with a journey time of 35 minutes at 30-minute frequencies.

Additionally, passengers can also take a 3 minute ride between KLIA and KLIA 2.

Trains have a design speed of 176 km/h and operate at a cruising speed of 160 km/h using 25kV power supply and ATP signalling.

The KLIA Ekspres commenced operations on 14th April 2002 and KLIA Transit service on 1st June 2002. Services from KLIA to KLIA 2 commenced on 21<sup>st</sup> April 2014.

Both services of KLIA Ekspres and KLIA Transit have a current total ridership of approximately 30,000 passengers per day. The first 1 millionth passenger was recorded in December 2002, the 30 millionth passenger in June 2010, the 50<sup>th</sup> millionth passenger in March 2014 and the 100<sup>th</sup> millionth passenger is expected to pass through our gates in 2019. For convenience, Kuala Lumpur Sentral offers airline check-in facilities.

E-MAS, with approximately 350 staff, has successfully and consistently operated the Express Rail Link Services at **99.7%** average on-time arrivals.

E-MAS with its in-house developed Railway Expertise, serves as consultant to other Railway Projects.

Express Rail Link Sdn Bhd is owned by well-established shareholders, namely, YTL Corporation Berhad (45%), Lembaga Tabung Haji (36%), SIPP Rail Sdn Bhd (10%) and Trisilco Equity Sdn Bhd (9%).

## Express Rail Link, The CONSISTENT PERFORMER



# 99.7%

**Train On-Time World Class Performance**

**supported by**

**World Class Maintenance**

Since 2004 till to-date, Express Rail Link has achieved this excellent service performance and retained the same level of performance moving forward.

Express Rail Link places a priority on safety and has maintained an excellent record in Railway Safety.

**Express Rail Link, Malaysia's High Speed - High Mileage Railway.  
Operated and Maintained by E-MAS**

**Daily mileage for one train: 1,064km  
Yearly mileage for one train: 388,700km**

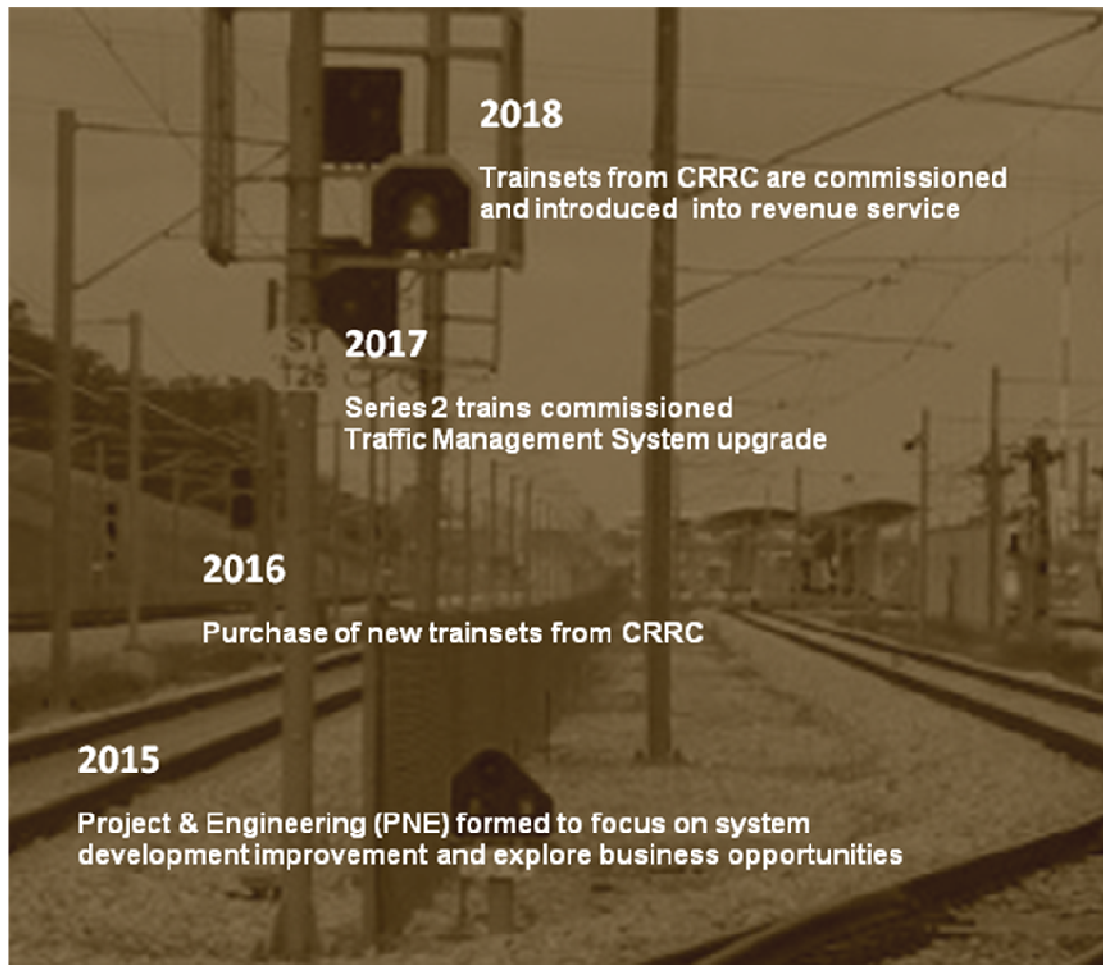
**Ekspres Train: 137 Trips Daily  
Transit Train: 100 Trips Daily**

## The E-MAS story

E-MAS is fully owned by Express Rail Link Sdn Bhd and is located at Kompleks Rel Udara in Bandar Baru Salak Tinggi in the district of Sepang, Selangor Darul Ehsan, Malaysia, located a mere 10km from Kuala Lumpur International Airport.

Our staff are highly trained and qualified in Railway Operations and Maintenance. They have experience drawn from many different railway networks in Asia, Europe, Africa and even Mecca.

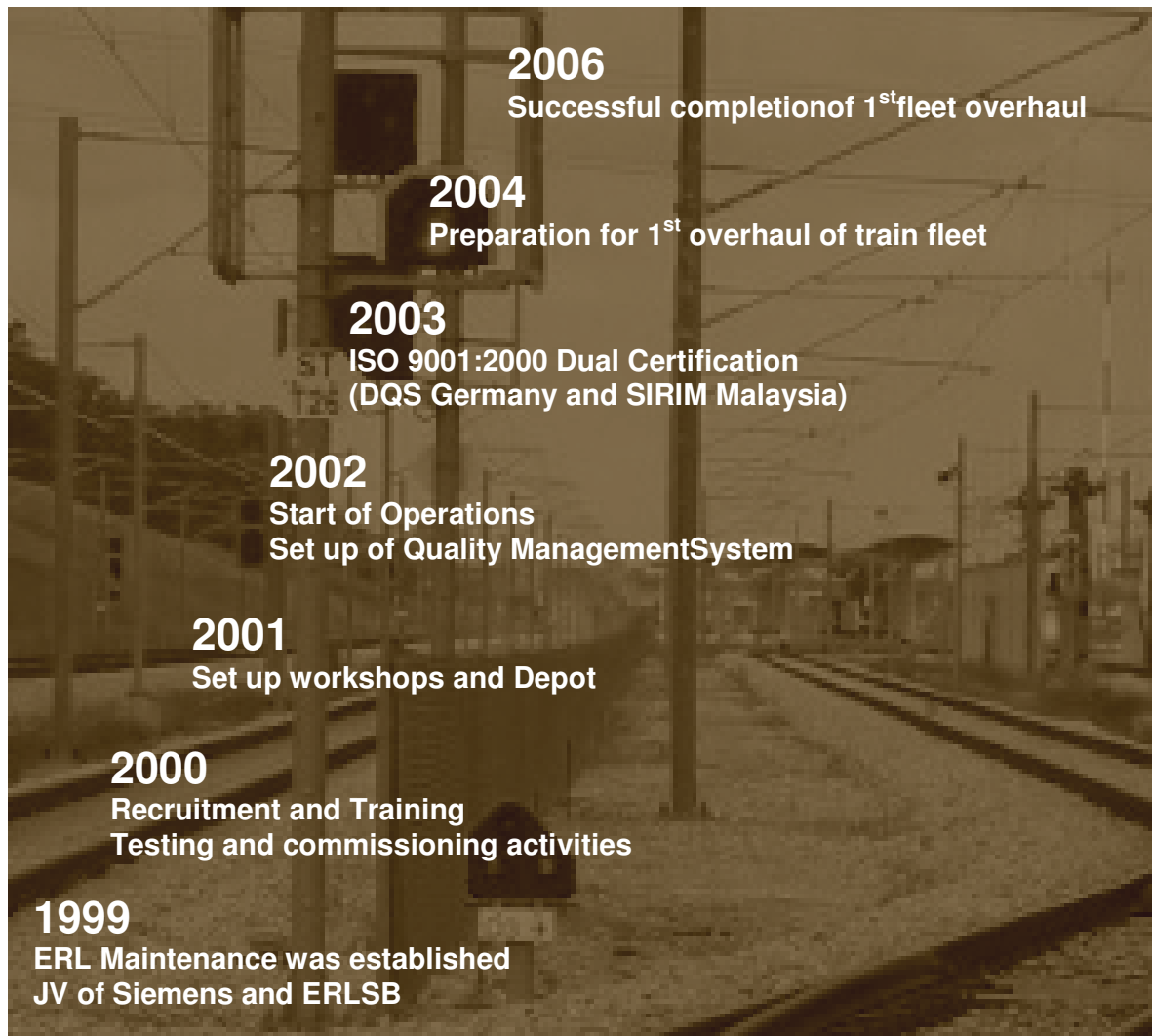
We also have specialists in technical and operation areas that handle all complex queries and problems. E-MAS also works closely with other recognised companies in the Railways of the world.



## The E-MAS story - continued



## The E-MAS story - continued



# Maintenance Centre



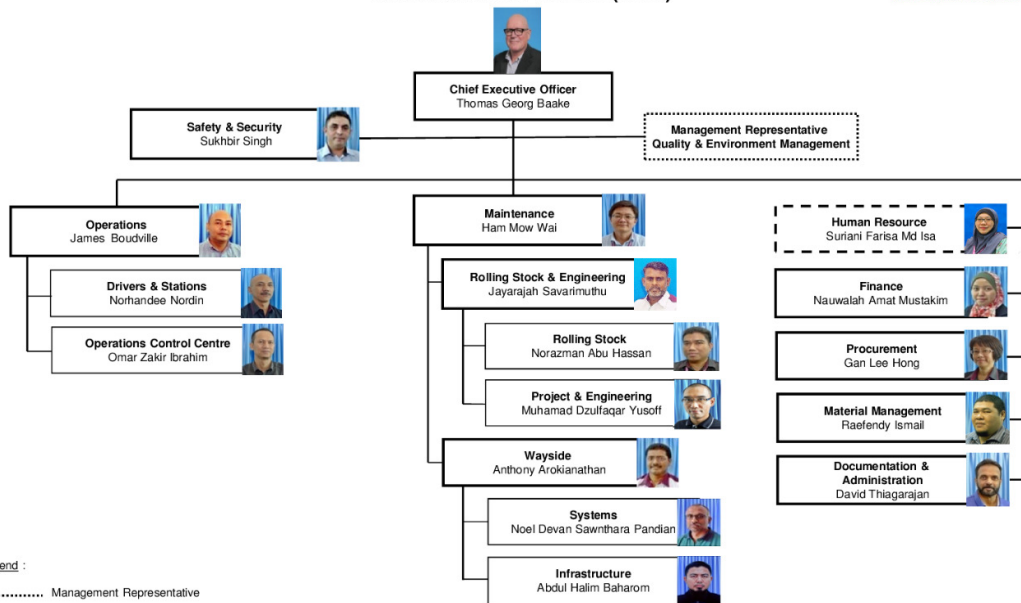
## Organisation Chart

Effective Date : 01.01.2021

ERL MAINTENANCE SUPPORT SDN BHD (E-MAS)



### ORGANISATION CHART (NEW)



**Legend :**

- ..... Management Representative
- - - - Group Head, Human Resource Management for ERLSB & E-MAS

Prepared by: RZQ

ERL Maintenance Support Sdn Bhd - Co. Reg. No. 199901023674 (498574-T)

G00.OMG.M11110.BB.0005.AF [#44478]

**For Effective Railway Operations**

**and**

**Reliable System Maintenance**



**contact us at:**



*Effective Railway Operations; Reliable System Maintenance*

**ERL Maintenance Support Sdn Bhd**

Kompleks Rel Udara, Bandar Baru Salak Tinggi,  
43900 Sepang, Selangor, Malaysia

Tel: +6-03-2267-7676 Fax: +6-03-2267-7770

Website: <http://www.emskliaekspres.com/>



**EXPRESS RAIL LINK**

**Express Rail Link Sdn Bhd**

Level 2 KL City Air Terminal, KL Sentral Station,  
50470 Kuala Lumpur, Malaysia

Tel: +6-03-2267-7777 Fax: +6-03-2267-8910

Website: <http://www.kliaekspres.com/>